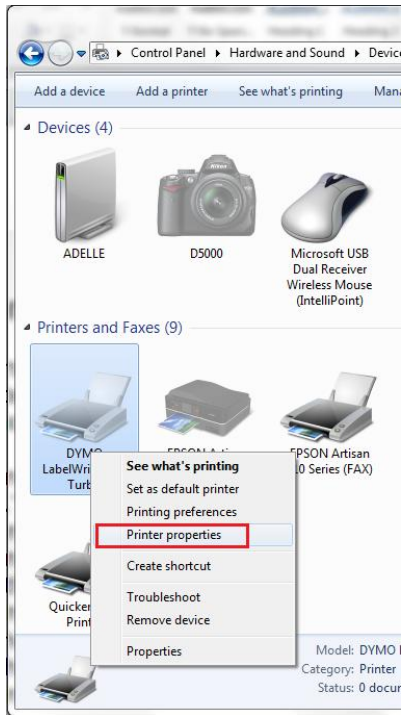
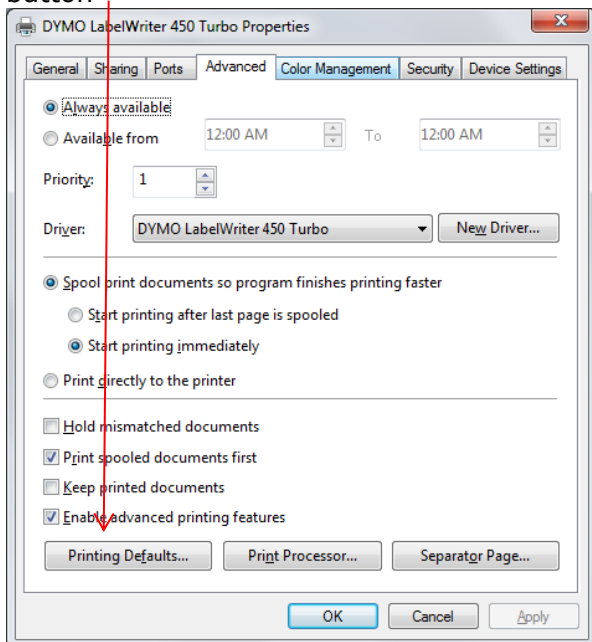


How to Configure the Dymo 450 Settings

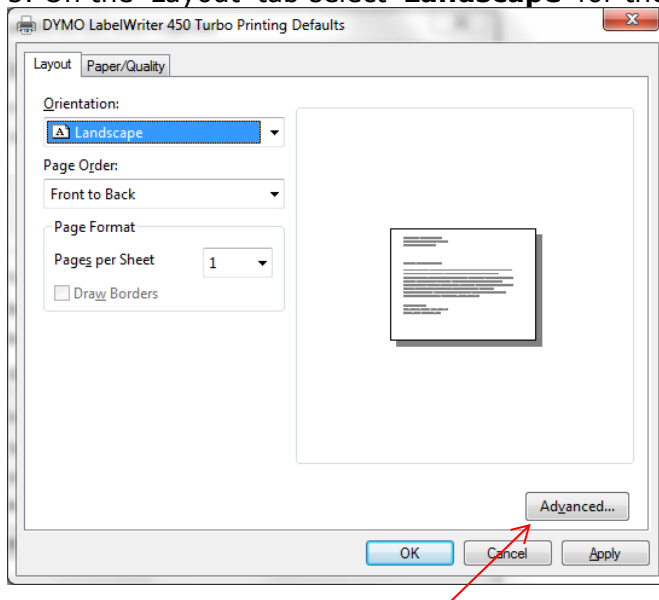
1. Go to the Devices and Printers section of the Windows Control panel
2. Right-click on the Dymo printer
3. Choose **'Printer Properties'** (not to be confused with 'Properties', which is also a selection in the menu)



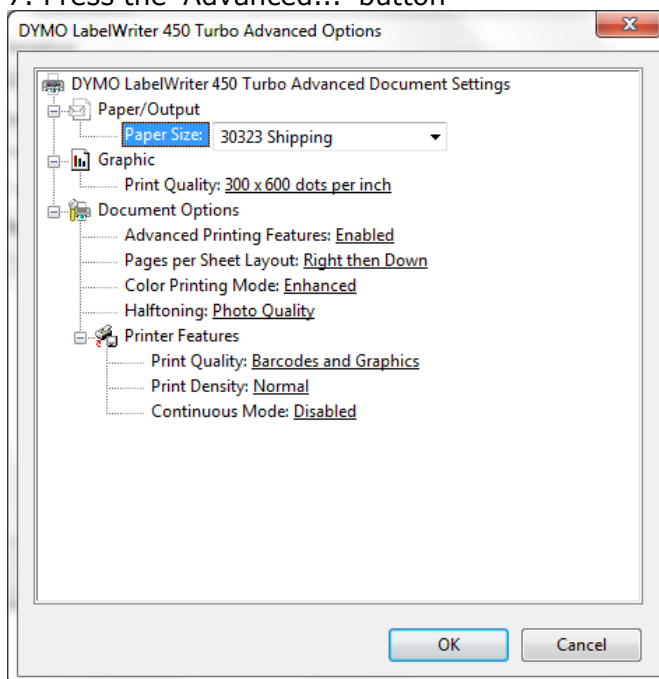
4. Select the 'Advanced' tab along the top of the screen and press the 'Printing Defaults...' button



5. On the 'Layout' tab select '**Landscape**' for the Orientation



7. Press the 'Advanced...' button



8. Choose '**30323 Shipping**' for the Paper Size

9. Choose '**300 X 600 dots per inch**' for the Graphic Print Quality

10. Choose '**Photo Quality**' for the Halftoning setting

11. Choose '**Barcodes and Graphics**' for the Printer Features Print Quality

12. Keep pressing the OK button to close each of the screens